

The **multi-correlator** of the **next generation** –
hybrid, GPS-based, unique.



**ΚΑΜΑ ΕΛΛΑΣ Μ.Ε.Π.Ε.
ΑΝΤΙΠΡΟΣΩΠΕΙΕΣ
ΝΑΡΚΙΣΣΟΥ 13
57013-ΩΡΑΙΟΚΑΣΤΡΟ
ΤΗΛ. ++30-2310-698962
ΦΑΞ. ++30-2310-699071**



Sealog Corr

- Correlation with up to 8 sensors at the same time
- GPS navigation directly to the leak
- Radio communication to the sensors
- No staff needed for night measurement
- Sound velocity assistant (V-assistant)
- Unique pinpointing mode

sebaKMT



Sebalog Corr – that's how easy you find leaks today.

Fast and extremely precise

Hybrids for leak pinpointing

Sebalog Corr is the new generation of leak pinpointing. This hybrid form of a field correlator and a kit of noise loggers combines the independent operation mode and the high number of the loggers' sensors with the correlators' ability to calculate the exact distance to the leak using the sound it makes.

This form of leak detection allows the user to locate even the most difficult leaks quickly and precisely, thus saving valuable time and money. The unique pinpointing feature enables the operator to confirm correlations directly on site.

The leak navigator

One of the most remarkable features of Sebalog Corr is the leak navigator. Just like a navigation system, the GPS-based leak navigator leads you to the previously correlated leak position. During navigation, your position is continuously displayed on the map so that you know exactly in which direction you should go to reach the leak.



The measurement results of the sensors (max. 8 per kit) can be correlated at the push of a button. You get up to 28 correlations, including a quality statement for each result.

Sebalog Corr has three different applications:

1. Instantaneous measurement...

...is provided for the use of the correlator in the daily inspection of pipe networks. In this process, the sensors are programmed for a brief measuring period, set out, and after the measurement, collected again so that the results can be evaluated.

2. Night measurement

This measurement mode is outstanding for locating hard to find leaks, because much fewer interfering noises influence the measurement during the night.

3. Pinpoint location...

...is one of the Sebalog Corr's applications which makes it unique. Thanks to this function, the Sebalog Corr is able to verify correlation results without the use of additional devices.



After the readout of measuring results, you have access to comprehensive analysis tools such as the repetition of the recorded signal, for instance.

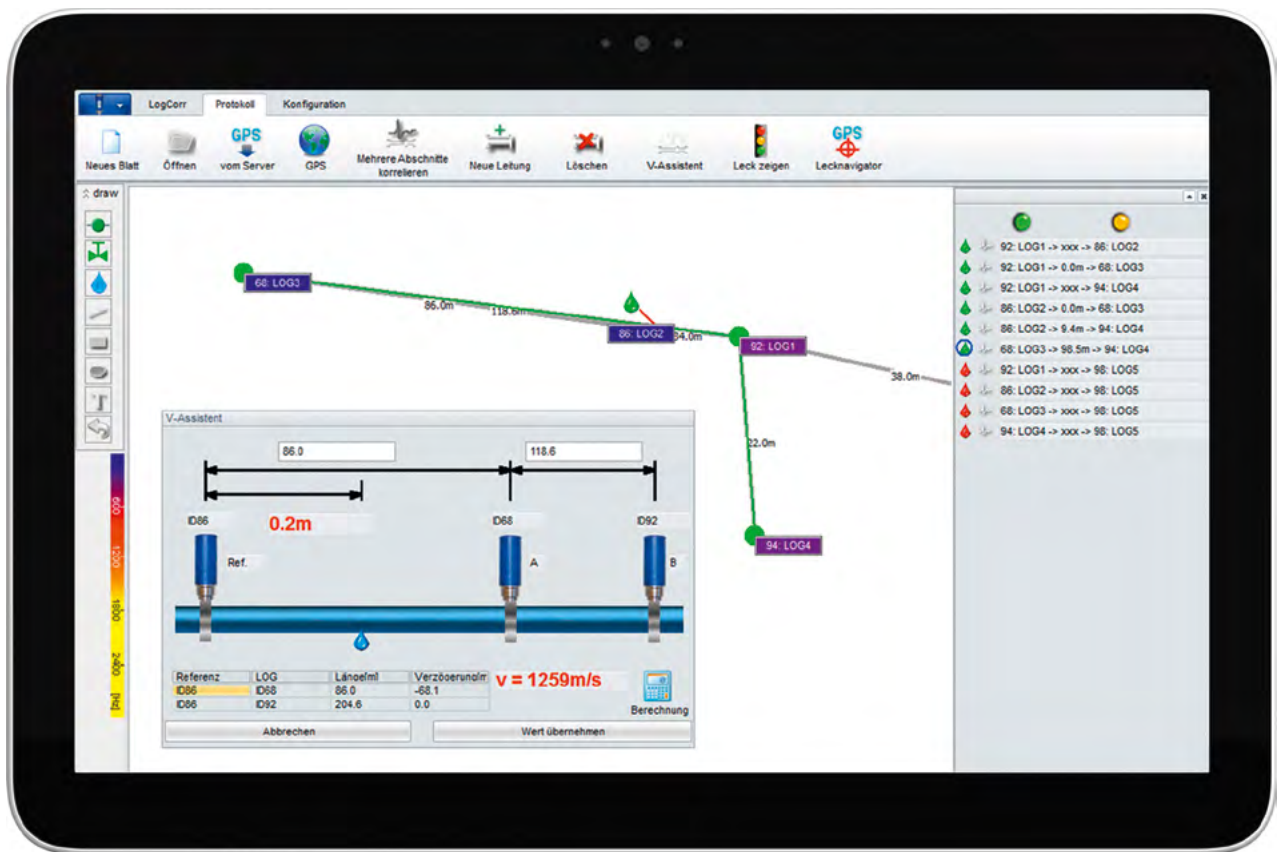


Figure 1: V-assistent

These special functions helps you locate leaks

V-assistent

Should you have no or insufficient data about the pipeline, use the V-assistent to measure the sound velocity in the pipe.

With the V-assistent, correlations can be carried out successfully without having to enter parameters such as pipe material and diameter.

If the GPS positions of the sensors are recorded, the V-assistent will automatically copy them. Data input of the pipe length is thus no longer necessary. (see fig. 1)

GPS mapping

While deployed, the GPS position of the sensors can be immediately stored via USB-GPS receiver or smart phone. The GPS data can then be used for an automatically generated survey map for further analysis of the measurement results. (see fig. 3)

Measurement reports

Measurement reports are important. With its comprehensive mapping and logging function and a user-friendly software, the Sebalog Corr offers you everything you need for the analysis of measurement data. In just a few steps, you can create a significant measuring report ranging from simple free-hand drawings to complex network maps.

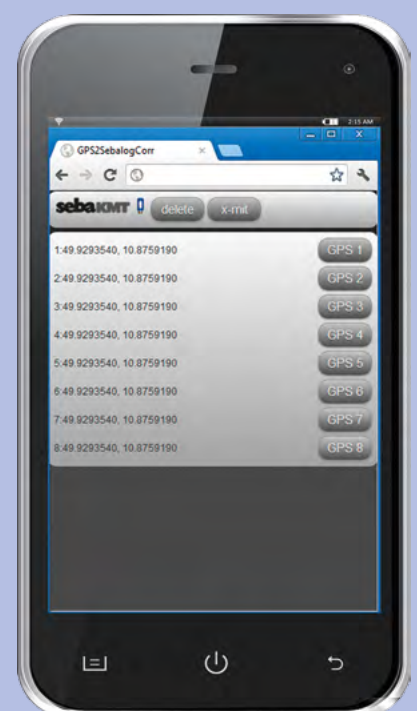


Figure 3: GPS data storage

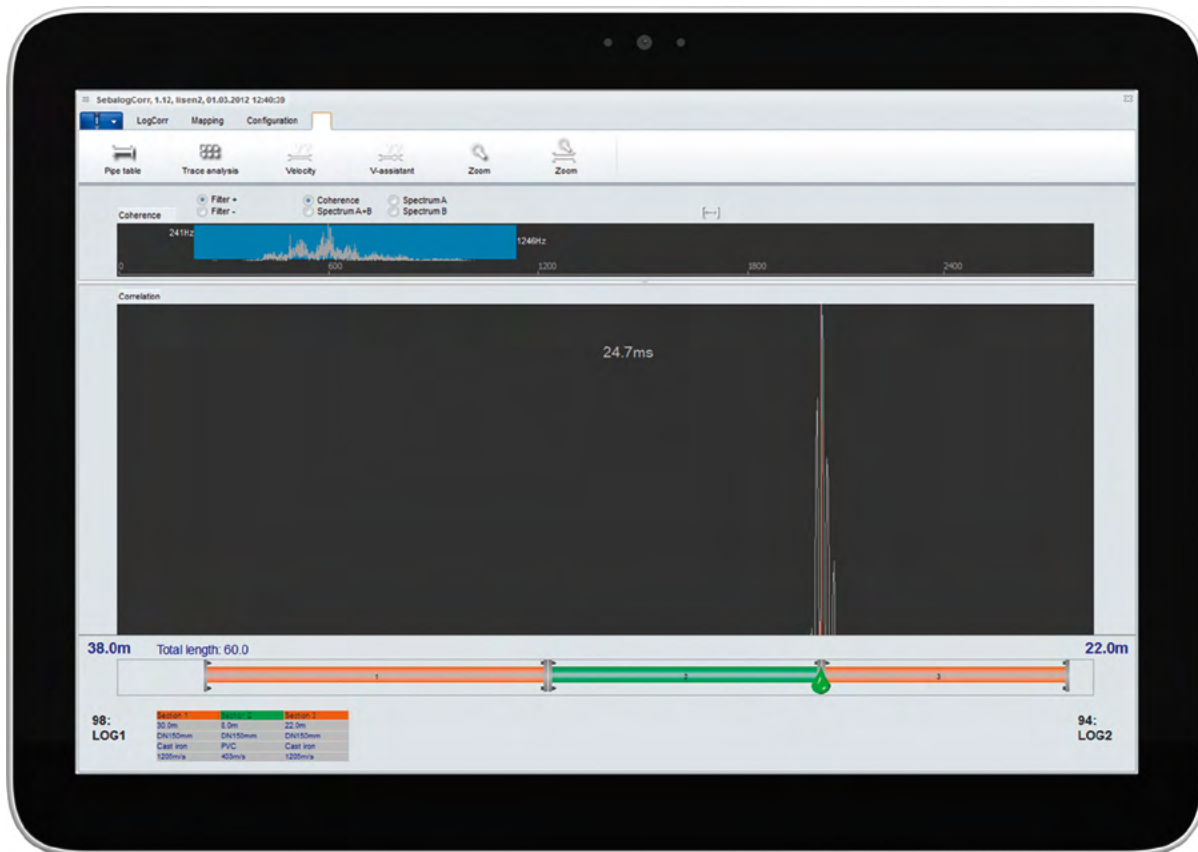


Figure 2: Single correlation

Get to the point

Single correlations help you detect the leakage with pinpoint accuracy. You have access to extensive diagnosis functions and auxiliary tools to analyse the measurement data. (see fig. 2)

„Show leak“ function

The „show leak“ function shows you a list of all possible leakages in the network. If two or more sensors have the same correlation result, the „show leak“ function will show you this result clearly and immediately. (see fig. 4)

Correlation by pushing a button

The measurement results of the sensors are correlated at the push of a button. Additionally, you also get a quality evaluation of the correlations. (see fig. 5)

Everything in view

In the sensor list, you will find the necessary information about the sensors, measurement, recording the GPS position at the push of a button, and displaying of noise/frequency values.

Listen to the noise

After the measurement, you can listen to the noise the sensor recorded.

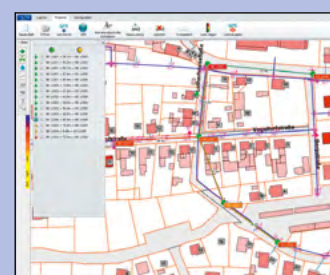
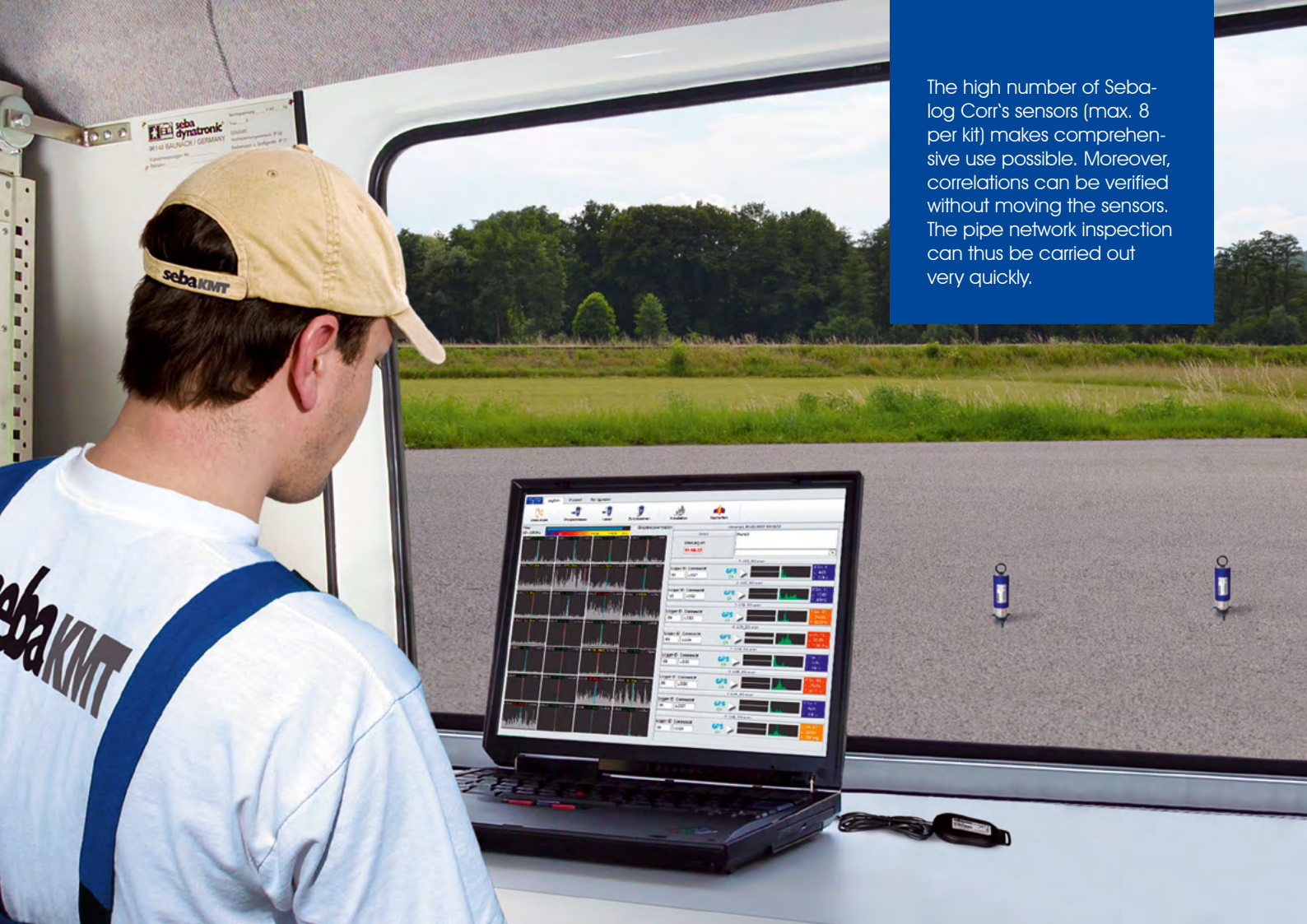


Figure 4: „Display leak“ function



Figure 5: Correlation results



The high number of Seba-log Corr's sensors (max. 8 per kit) makes comprehensive use possible. Moreover, correlations can be verified without moving the sensors. The pipe network inspection can thus be carried out very quickly.

All you ever needed!

Safety first

Due to their small size, Sebalog Corr's sensors fit even into the smallest valve chambers. The chamber lids can be closed during the measurement. Accident risks are thus eliminated, and measurements can be carried out with no additional protection measures for traffic or pedestrians.

Boundless correlations

Sebalog Corr's sensors record correlation data self-dependently. Data readout is done after the measurement is finished. Active radio communication between the sensors and the correlator is not necessary during measurement. Therefore, the correlation range is not dependent on radio communication.

Easy correlations

From the sensor to measurement reports, the entire Sebalog Corr system has been designed to save time, facilitate work, and above all, to ensure useful correlation results. The intuitive operating concept is easy to understand and offers many supporting details.



Technical data

Sebalog Corr	
Dimensions	115 x 45 mmØ
Weight	400 g
Power supply	Internal Lithium Battery
Operation time	>5 years, when standard settings are used
Protection class	IP 68
Operation conditions	-20 ... +60 °C
Radio output power	10 mW
Communications	Bi-directional radio

Sebalog Radio Interface (RI)	
Dimensions	80 x 47 x 17 mm
Weight	50 g
Power supply	USB
Protection class	IP 52
Operation conditions	-10 ... +50 °C
Communications	Bi-directional radio, USB

Scope of delivery

- » 3, 6 or 8 sensors¹
- » 3, 6 or 8 angle adapter¹
- » 3, 6 or 8 tripod adapter¹
- » Radio interface Sebalog RI with USB cable
- » Carrying case
- » Application software
- » GPS receiver
- » Headset
- » Manual

Attention: the illustrated laptops, tablets and the smart phone are not part of the kit!

¹ The Sebalog Corr system is available as a 3-, 6- or 8-piece kit.



For more informations please visit
www.sebakmt.com/corr

Get more on your
smart phone

Simply scan
our QR code.

